

Alsek River

Designated Camping Areas

Camping Restrictions

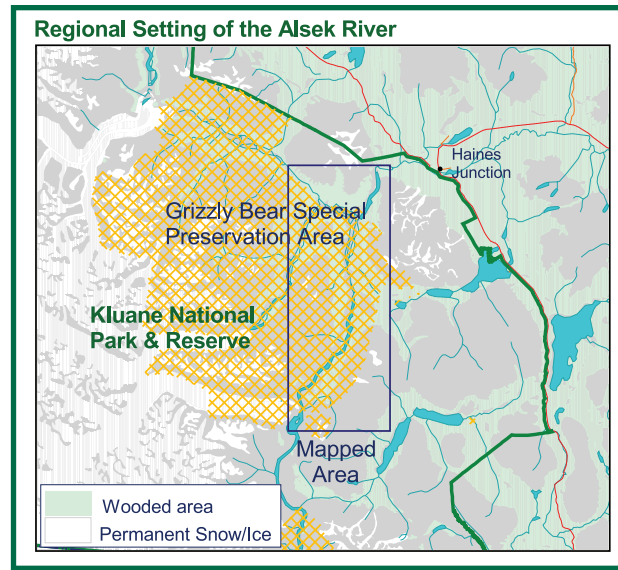
Near the beginning of your trip you will be traveling through an area designated as a Special Preservation Area for Grizzly Bears. Although traveling in grizzly bear territory needs special attention at all times, specific consideration and camping restrictions apply within this area.

Grizzly Bear Special Preservation Area

Portions on the upper Alsek and Kaskawulsh River drainages have been designated as a Grizzly Bear Special Preservation Area within Kluane National Park. This area is defined by yellow hatching in the map.

The Alsek River valley contains areas of high quality grizzly bear habitat along its entire length; the river's edge is a major travel corridor for the bears. Bears may be encountered anywhere and at any time while traveling on the river.

Camping restrictions have been implemented within the Special Preservation Area to reduce human-bear conflicts and minimize disturbance or displacement of bears. The restrictions pertain to the area from Serpentine Creek to Lowell Lake.



Restrictions

- Firearms are prohibited within Kluane National Park and Reserve
- Camping is permitted only at designated campsites, or within designated camping areas, between Serpentine Creek and Lowell Lake.
- River travelers are restricted to one night of camping between the confluence of the Dezadeash and Kaskawulsh Rivers and Campsite #9.
- Two nights of camping are permitted at Lowell Lake designated camping area.

Campsite	UTM	Longitude / Latitude	Side of River
1	8V 350199 / 6734055	60° 42' 50.1" N / 137° 44' 44.1" W	River Right
2	8V 348478 / 6730063	60° 40' 38.9" N / 137° 46' 26.4" W	River Left
3	8V 347789 / 6728003	60° 39' 31.5" N / 137° 47' 05.9" W	River Left
4	8V 347114 / 6727165	60° 39' 03.5" N / 137° 47' 48.0" W	River Left
5	8V 344859 / 6717742	60° 33' 56.2" N / 137° 49' 49.6" W	River Right
6	8V 345103 / 6717252	60° 33' 40.7" N / 137° 49' 32.3" W	River Left
7	8V 344825 / 6716320	60° 33' 10.2" N / 137° 49' 47.9" W	River Right
8	8V 344568 / 6702934	60° 25' 57.7" N / 137° 49' 27.0" W	River Right
9	8V 335616 / 6690567	60° 19' 05.7" N / 137° 58' 35.2" W	River Right
10	8V 336009 / 6687403	60° 17' 24.2" N / 137° 58' 00.3" W	River Left
11	8V 335366 / 6685963	60° 16' 36.8" N / 137° 58' 37.9" W	River Left

Campsite coordinates datum: Alaska NAD 27 UTM (Zone 8) Easting / Northing

- Travelers must ensure human food and garbage are not accessible to bears.
- The use of bear resistant food containers and/or portable fences is highly recommended.
- Use caution when traveling in bear country.

For more information

Kluane National Park & Reserve
Box 5495
Haines Junction, Yukon
Y0B 1L0 CANADA

email: kluane.info@pc.gc.ca
website: www.pc.gc.ca/kluane

Legend

	Designated Camping Area
	Designated Campsite
	Goatherd Closure Area (Camping Prohibited)
	Permanent Snow/Ice
	Dry riverbed

Produced by Parks Canada, Kluane National Park and Reserve, August 2002.
Base map from Natural Resources Canada 1:50,000 Digital Topographic Data.
Area of coverage: National Topographic Series 1:50,000 mapsheets 11505/115A12.

2 0 2 4 Kilometers

Ces renseignements sont aussi disponibles en français.
Map not suitable for navigation.

